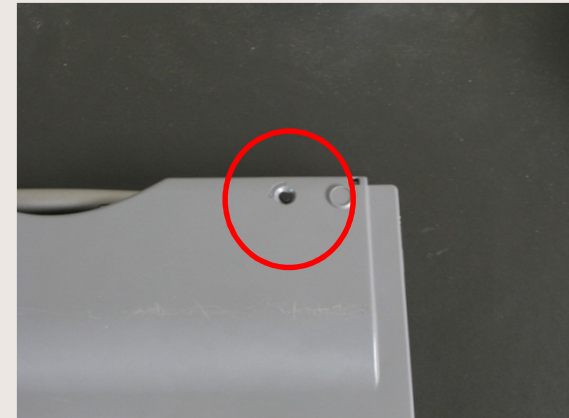


General guide for setting up an
Airliner Wireless Slate[©]
(Mac)



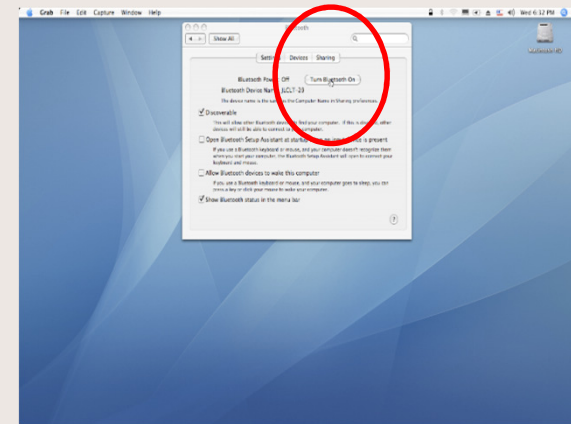
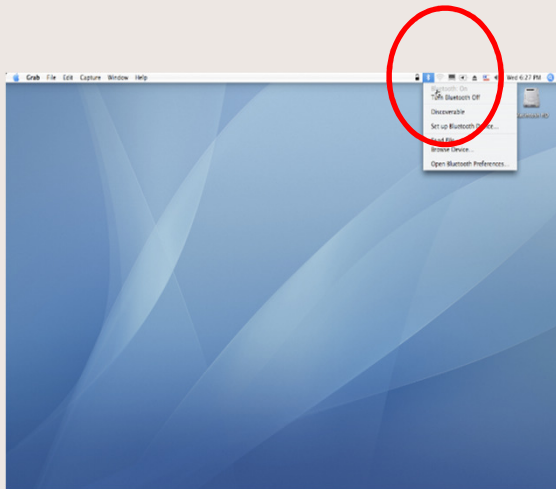
STEP 1

- Turn slate over and push “connect” button to transmit a discoverable bluetooth signal. Power button will flash blue for 2 minutes, or until it is paired with a computer.



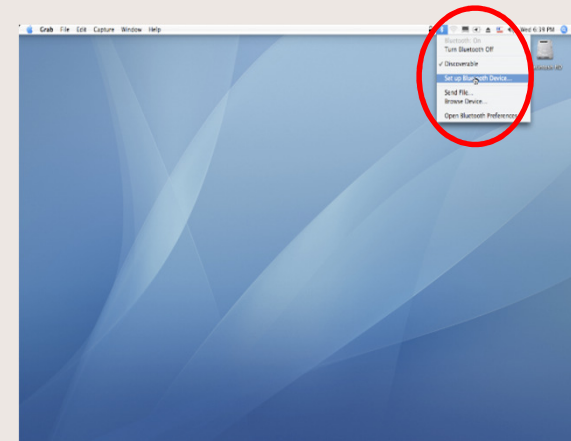
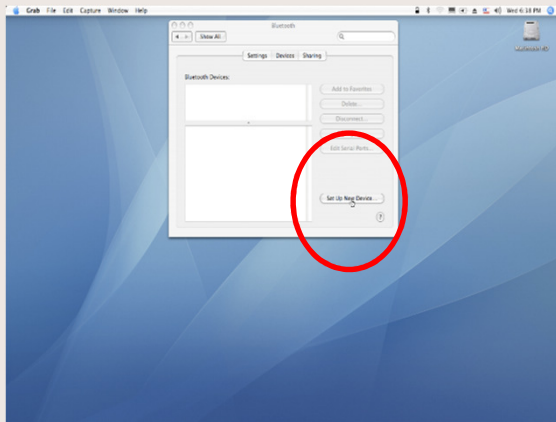
STEP 2

- Locate the bluetooth icon in the taskbar, or in system preferences -> hardware. Click “turn bluetooth on”.



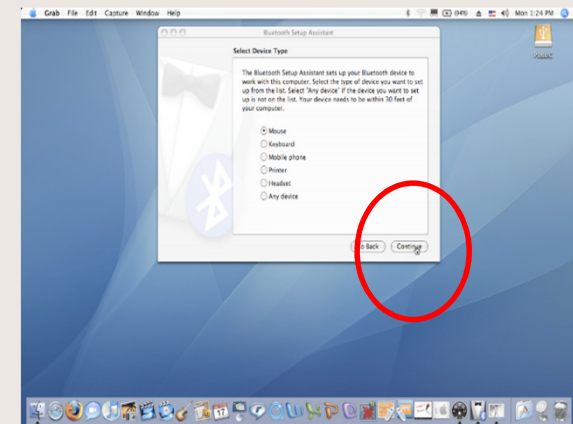
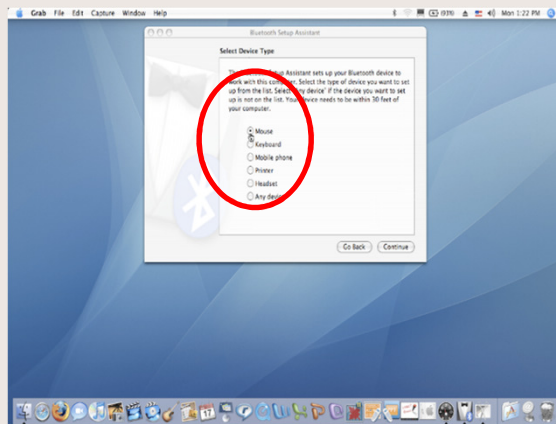
STEP 3

- Click “Set up...device” to enter the bluetooth assistant. Once in the assistant, read the introduction, and click “continue”.



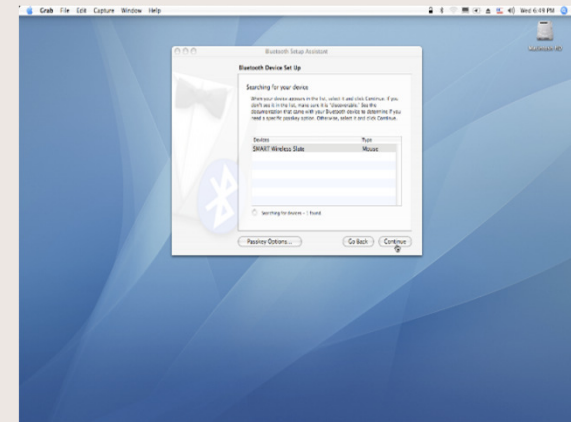
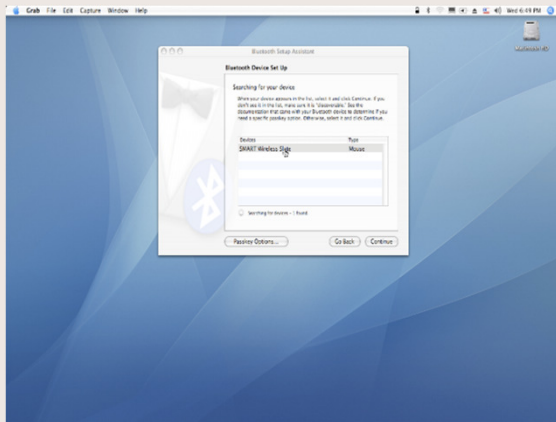
STEP 4

- Select “Mouse” as device type, and click continue.



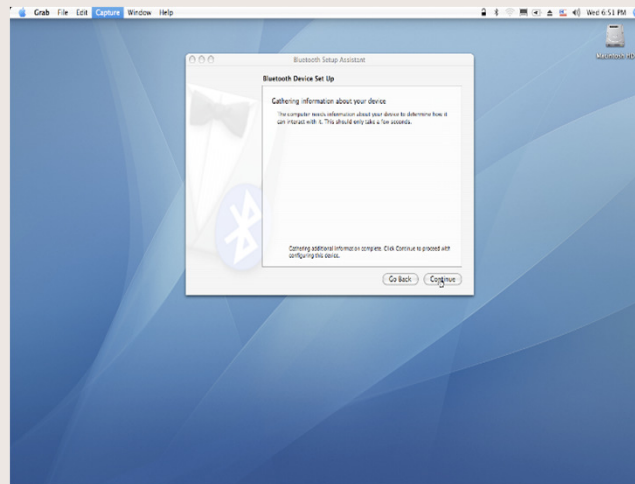
STEP 5

- Highlight “SMART wireless slate” when it appears, and click “continue”.



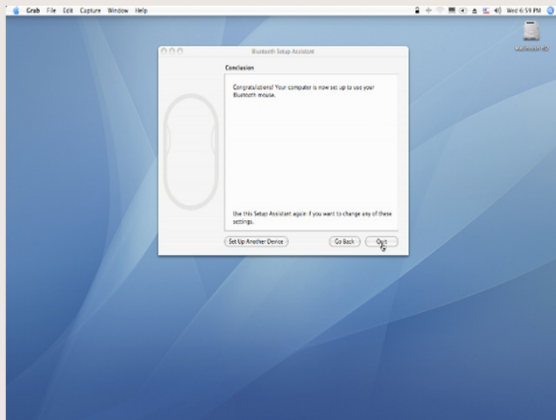
STEP 6

- PLEASE WAIT while the computer gathers data about the device...



STEP 7

- You will receive a congratulations from the assistant when complete. Quit the set up assistant. The power button on the slate will turn solid blue, confirming a successful pairing.



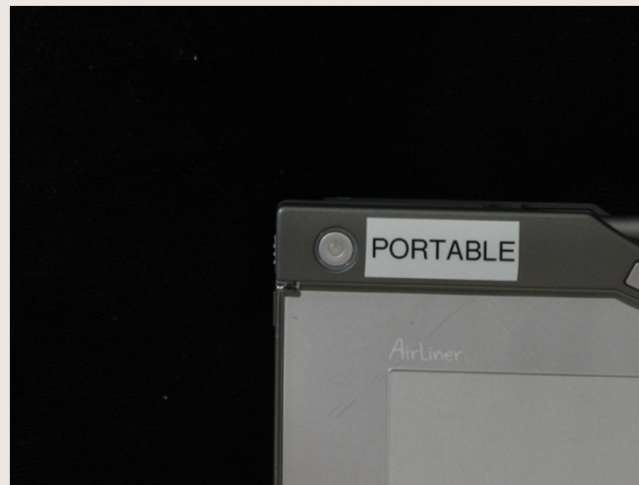
STEP 8

- Use the icons on the right of the tablet to choose pen colors, mouse functions, or tool options. The outlined area in the middle of the tablet corresponds to the computer desktop.



STEP 9

- At session's end, shut off power to the tablet, and turn off the computer's bluetooth signal, or remove the adapter.



STEP 10

- Please remember that this is a GENERAL help guide, as there are many variables when dealing with presentation equipment. Please contact our main office at (631) 632-9400 for further assistance.

